

Chercheurs et professionnels de l'IST

dans la gestion des données de recherche :

Changeons l'angle DATACC' !

**Dispositif d'accompagnement
à la gestion des données de recherche
en physique et en chimie**



LIVRABLES

Une plateforme

Un programme de
tutorat

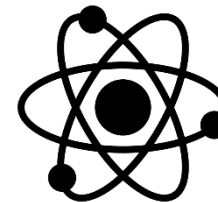
Cahiers de labo
électroniques

APPROCHE

Disciplinaire



Created by Dinosoft Labs
from Noun Project



Created by Pham Thi Dieu Linh
from Noun Project

Co-construite





Collaborer

BUSINESS
at jobs for people
travel

INVOICE

Business Company

| Item | Quantity | Unit Price | Total |
|-----------|----------|------------|-------|
| Product A | 10 | 100 | 1000 |
| Product B | 5 | 200 | 1000 |
| Product C | 2 | 500 | 1000 |
| Product D | 1 | 1000 | 1000 |
| Product E | 1 | 1000 | 1000 |
| Product F | 1 | 1000 | 1000 |
| Product G | 1 | 1000 | 1000 |
| Product H | 1 | 1000 | 1000 |
| Product I | 1 | 1000 | 1000 |
| Product J | 1 | 1000 | 1000 |

Information


It is a process to allow an organization to achieve the company's target market competitors.


| | M | T | W | T |
|----|---|---|---|---|
| 2 | | | | |
| 9 | | | | |
| 16 | | | | |
| 23 | | | | |
| 30 | | | | |

S'inspirer des grands






 **Research Data**

 **UNIVERSITY OF CAMBRIDGE**



 **UNIVERSITY OF CAMBRIDGE**
University Library

DATA CHAMPION WANTED!

Do you want to be the local expert in Research Data Management in the department?

BECOME A DATA CHAMPION

Are you interested in looking after & sharing data properly? Do..





Olivier Dezellus
 Maître de conférence
 Laboratoire Matériaux
 Interfaces
 CNRS- UCBL

Laboratoire 3SR - UMR 5521



Robert Peyroux
 Directeur du laboratoire
 3SR « Sols, solides,
 structures, risques »
 CNRS - UGA-
 Grenoble INP

*Pourquoi avoir eu envie
 de vous associer au
 projet DATACC' ?*

*Gestion des données:
 à quoi diable peut bien
 servir un bibliothécaire ?*



La méthode DATACC'

$$\begin{aligned} &= 2t^2(3z + 1) \\ \Rightarrow L^2 z &= 2t^2 z \\ \Rightarrow z &\text{ is an eigen function of } L^2 \\ \Rightarrow L^2 z &= \lambda(2t+1)z = 2t^2 \end{aligned}$$



« Ethnographique »

Agile



Les enjeux de la gestion des données de recherche

Enjeux

- Enjeux scientifiques :
 - Améliorer la qualité de la recherche, transparence
 - Améliorer la visibilité et l'impact de la recherche
 - Faciliter de nouvelles recherches
- Enjeux économiques :
 - Rentabiliser les coûts
 - Accélérer l'innovation
- Enjeux sociétaux et patrimoniaux

Disasters really do happen...

Manchester cancer hospital fire 'may have destroyed vital research'

Cancer Research UK institute likely to have lost millions of pounds of life-saving equipment in blaze, says its director



▲ More than 100 firefighters and 16 fire engines tackled the blaze at Christie hospital. Photograph: Paul Ellis/AFP/Getty Images

Years of research and millions of pounds of life-saving equipment are feared to have been destroyed in a devastating fire at a cancer hospital in **Manchester**, its director has said.

https://www.theguardian.com/uk-news/2017/apr/28/manchester-christie-cancer-hospital-fire-research-equipment-destroyed?CMP=Share_iOSApp_Other

de plus en plus une obligation ...

« Afin de favoriser la diffusion ouverte des données de recherche, l'ANR attire l'attention sur l'importance de considérer la question des données de recherche au moment du au long du projet. Elle imposera un plan de gestion des données (DMP) pour les projets de 2019. Pour des informations détaillées sur la démarche d'« Optimisation du Partageabilité des Données de la Recherche », les déposants sont invités à consulter le portail ligne par l'Inist-CNRS : <https://opidor.fr> »

Données de la Recherche – 2018_2019

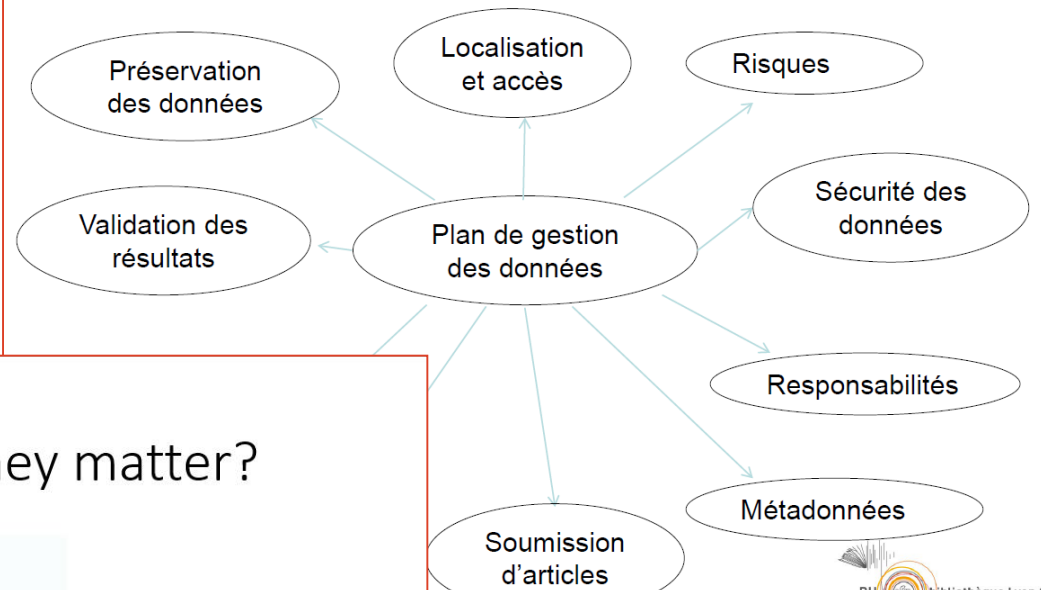


11

Atelier gestion des données de recherche

Les plans de gestion de données : pour quoi faire ?

Un plan de gestion des données de la recherche – objectifs



File naming conventions – do they matter?



Copyright: <http://10pm.com/>

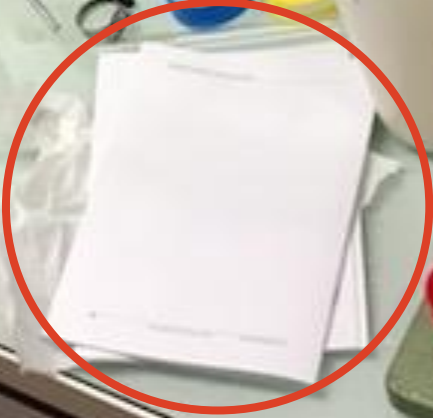
Terrain



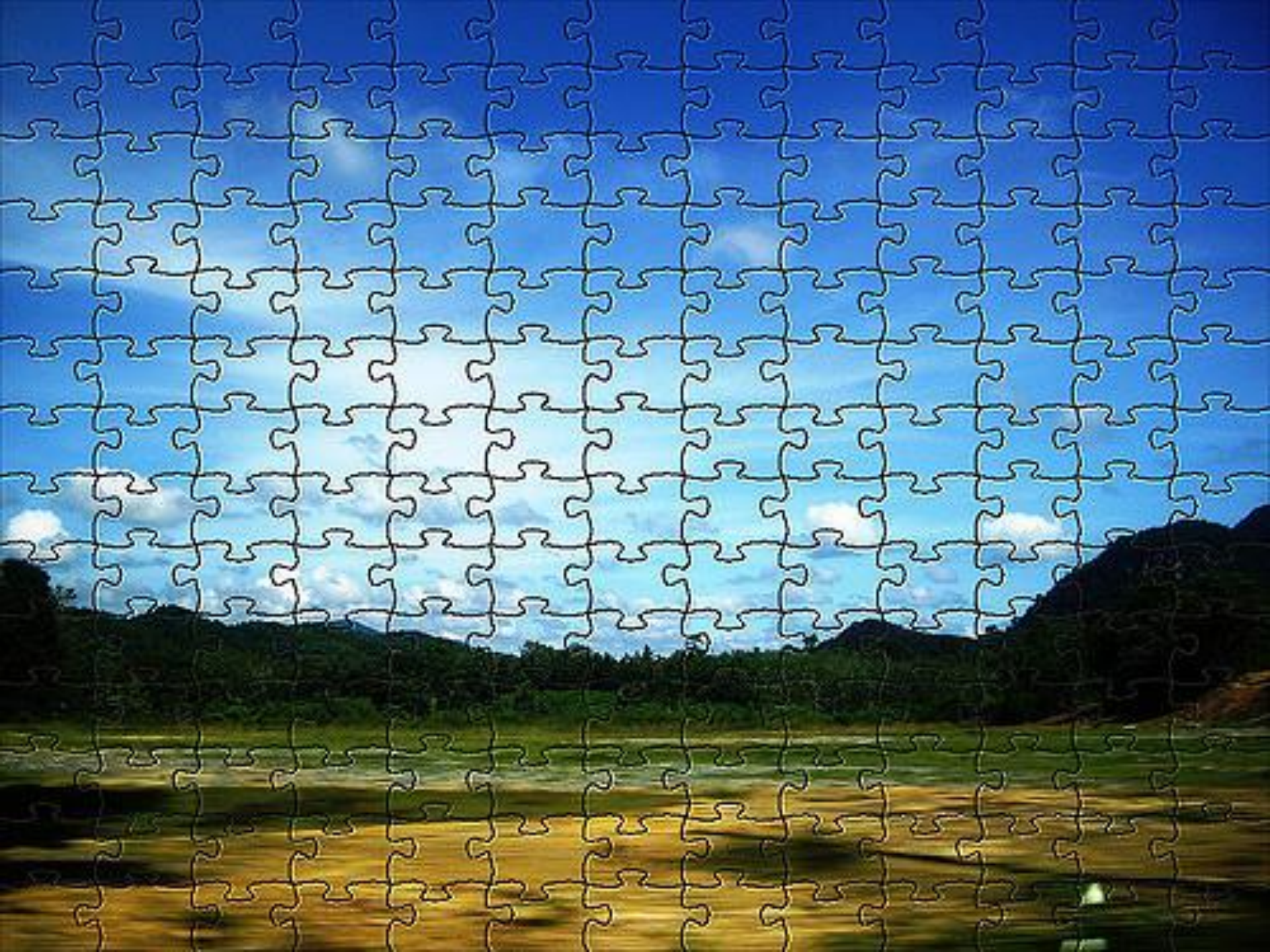
$$\begin{aligned}
 L^*(\phi) &= -\sin(\phi) \frac{d\phi}{dt} - \cos(\phi) \frac{d^2\phi}{dt^2} \\
 &= -\sin(\phi) \frac{d\phi}{dt} - \cos(\phi) \frac{d}{dt} \left(\frac{d\phi}{dt} \right) \\
 &= -\sin(\phi) \frac{d\phi}{dt} - \cos(\phi) \frac{d^2\phi}{dt^2}
 \end{aligned}$$

Et.... Ça marche ?

$$\begin{aligned}
 &= 2t^2 (3z + \dots) \\
 \Rightarrow L^2 z &= 2t^2 z \\
 \Rightarrow z &\text{ is an eigen function of } L^2 \\
 \Rightarrow L^2 z &= \lambda(L^2) z = 2t^2 z
 \end{aligned}$$











[Faded handwritten notes and equations]

$$L^2(\phi) = -\dots$$
$$= -\dots$$
$$= 2t^2 \dots$$

Conclusion (à ce stade...)

$$= 2t^2 (3z + \dots)$$
$$\Rightarrow L^2 \phi = 2t^2 \phi$$

ϕ is an eigen function of L^2

$$\Rightarrow L^2 \phi = \lambda(\phi) \Rightarrow \lambda = 2t^2$$


JUST DO
NOTHING

A black silhouette of a person is shown from the side, standing on a black and white striped curb. They are using a spray can to paint the words "JUST DO NOTHING" in red, blocky letters on a white brick wall. The wall is on the left side of a corner.

IT
IS IMPOSSIBLE

A black silhouette of a person is shown from the side, kneeling on a black and white striped curb. They are using a spray can to paint the words "IT IS IMPOSSIBLE" in red, blocky letters on a white brick wall. The wall is on the right side of a corner.

JUST DO IT
NOTHING IS IMPOSSIBLE

A black silhouette of a person is shown from the side, walking on a black and white striped curb. They are walking past a white brick wall that has the combined phrase "JUST DO IT NOTHING IS IMPOSSIBLE" painted on it in red, blocky letters. The wall spans across the corner of the scene.

Merci de votre attention !

Sophie.klopp@univ-lyon1.fr Chargée de mission ColLEX, SCD-UBCL

Christelle.cheval@univ-lyon1.fr Chargée de mission Recherche, SCD-UCBL

Lucie.albaret@univ-grenoble-alpes.fr Directrice des services à la recherche, SID-UGA

Belinda.missiroli@univ-grenoble-alpes.fr Chargée de mission ColLEX, SID-UGA

L'approche disciplinaire dans la gestion des données de recherche:

Higman, R. Teperek, M. Kingsley, D (2017). **Creating a Community of Data Champions**, *International Journal of Digital Curation* doi: [10.2218/ijdc.v12i2.562](https://doi.org/10.2218/ijdc.v12i2.562)

Castle, C. (2017). **Adapting central RDM messages to discipline-specific needs at the Department of Chemistry, University of Cambridge**. IFLA Satellite Meeting 2017: Data Curator's Roles and Responsibilities: International and Interdisciplinary Perspectives. <http://library.ifla.org/1723/>

Crédits Images

Images Pixabay (free for commercial use)

Cauchemar : Image par Johny Lindner / collaboration: image par Mohamed hassan / fillette: image par Sergey Nemo/ exploratrice: image open cliparts vectors de Pixabay / Excalibur: image par 470906

Images en licence CC-BY – SA 2.0

Illustration page de notes Matthew Mendoza / Ecole Polytechnique - laboratoire de physique de la matière condensée / Pictogrammes physique et chimie Dinsoft labs - Xinh studio for the Noun project/ puzzle1: Woody Thrower / puzzle2: gidibiru_kukunings

Image en licence CC-BY-NC-ND : data champions cartoon: Claire Trowell

Images en DR

Office of scholarly communications – Cambridge University library / Chat : mrlacroix.wordpress.com / serveurs CC-IN2P3 / tomographe: Belinda Missiroli, UGA / labo chimie: Sophie Klopp, UCBL / Just do nothing : Tang Yuo Hoong - Artists without borders

